



CORPORATE OFFICE:  
Pruthvi Group,  
Office No. 1 & 2, Parmar CHS Ltd.,  
Paranjape B Scheme Road No. 1,  
Vile Parle (E), Mumbai - 400 057. INDIA.

SITE ADDRESS:  
Pruthvi Pushpanjali, Shahaji Raje Marg,  
Vile Parle (E), Mumbai - 400 057. INDIA.

|                  |                 |
|------------------|-----------------|
| TEL.:            | MOB.:           |
| +91 22 2618 0796 | +91 91672 39292 |
| +91 22 2610 0796 |                 |

|                      |                 |
|----------------------|-----------------|
| info@pruthvigroup.co | pruthvigroup.co |
|----------------------|-----------------|

MahaRERA Registration No. P51800046070  
<https://maharera.mahaonline.gov.in>

DISCLAIMER: This brochure and its images are purely conceptual and not legal offering to its recipient by the promoter/developer nor will it be a part of any binding agreement. All units are unfurnished, and furnishing, fixtures, furniture shown are for aesthetic representation purpose only and are not a part of the flat/unit offered for sale.





Pruthvi Group brings to you  
a home that caters for a lifestyle  
of every generation.

For the one who treasure  
tranquillity and peace to the one  
who enjoy making memories  
from photogenic moments.

For the one who seeks  
outdoor space  
of inspiration and creativity  
to the one who wishes  
to live in a spacious  
and open surroundings.

## A PROMISE OF A LIFESTYLE FOR ALL GENERATIONS

Pruthvi Pushpanjali  
offers **DISTINCT DESIGN &  
ARCHITECTURAL STYLES,  
LIKE-MINDED COMMUNITIES,  
AMPLE OF OUTDOOR ARENAS**  
that provide space for introspection  
and a neighbourhood seamlessly  
connected by all means.

It offers a multi-purpose space  
that can be utilized for activities  
such as for Fitness,  
Meditation, etc.  
It also features dedicated pathways,  
play areas & other facilities  
that are a match  
for every generation.

So come and explore the  
lifestyle of your dreams because  
this is where you truly belong.



**SELF-ESTEEM,  
MORALS,  
ACHIEVEMENTS**  
and all the experiences  
of lifetime sparkles  
over the faces of a generation,  
whom we admire & respect.

## A PROMISE OF AN ACTIVE & ENRICHED FUTURE

Pruthvi Pushpanjali,  
invites its senior residents  
to enjoy a forward-facing lifestyle  
at the leading edge of  
health and wellness.

It also offers  
the comfort of  
**CONTEMPORARY DESIGN,  
CULTURAL &  
SOCIAL OPPORTUNITIES**  
along with  
peace of mind  
to be active  
and get involved  
in new experiences.



Inspired by all generations...



**CONTENTMENT,  
FOCUSED,  
ASPIRATIONS**  
and all the efforts  
which drives a generation  
who has built their dreams  
and fulfilled them.

## A PROMISE OF AN ASTONISHING & MODERN FUTURE

Pruthvi Pushpanjali,  
invites its responsible residents  
to enjoy the cityscape  
in full panorama  
from their own deck  
to alleviate the stress  
of high-powered life.

It also offers  
**UNBRIDLED  
PRIVACY**  
that reflects  
individual taste  
and stylish hot-spots  
all within the soothing  
setting of a new home.



Inspired by all generations...



**INVOLVED,  
INSPIRED,  
ENGROSSED**  
which encourages  
the generation next.

## A PROMISE OF AN AWE-INSPIRING & FULFILLING FUTURE

Pruthvi Pushpanjali,  
invites its millennials  
to enjoy the  
lifestyle choices  
that are unique  
& pleasant.

It also offers forgoing  
**LUXURIOUS  
INDOORS &  
CONVENIENT  
OUTDOORS**  
that keeps the  
active pursuit smarter  
with all the modern twists  
one would expect.



*Inspired by all generations...*



## **A SCINTILLATING PANORAMA**

Mesmerize the stunning and sprawling  
180° unhindered joggers park  
& swimming pool views from the deck.

Lie in bed and watch the sunrise,  
or grab your coffee  
and head to the balcony  
where you can take in the views  
of the chirping birds  
and blooming flowers.

Inspired by the concept of blooming,  
Pruthvi Pushpanjali centers on  
introducing a flourishing essence  
to the neighborhood  
by analyzing various species  
of flowers and trees.



**SOUTH WEST VIEW**

*Inspired by all generations...* 



Actual Photo



## PRUTHVI PUSHPANJALI, IS THE LATEST RESIDENTIAL DEVELOPMENT IN VILE PARLE FROM THE HOUSE OF PRUTHVI GROUP

The project comprises of 4 wings offering 2, 3, 3.5, 4, 5 & 6 bed premium apartments with a deck, spread over a lush green landscape that defines peace. It offers a range of indoor and outdoor amenities for you and your family to indulge and enhance a healthy lifestyle.

The apartments have great spatial quality and consist of efficiently designed interiors ensuring maximum ventilation and natural light with pollution-free environment.

For all those who enjoy safe communities and serene environment - Pruthvi Pushpanjali is the definition of peaceful and premium living, where you treasure precious moments and create everlasting memories.



PRUTHVI  
PUSHPANJALI  
*Inspired by all generations...*



# A WELCOMING ARRIVAL

Inspired by all generations... 



ENTRANCE LOBBY



Double Height  
Basement  
Stack Parking



Space for  
Yoga / Meditation  
Centre



Walking  
Track



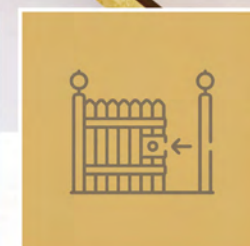
Senior Citizen  
Area



Garden &  
Pool View



Balcony / Deck  
in each Apartment



Gated  
Community



Rain Water  
Harvesting

Artist's Impression

A PARADISE OF INDULGENCES

Inspired by all generations... 



DRIVEWAY

Artist's Impression

## A RECREATIONAL LANDSCAPE

Inspired by all generations... 



## ROOFTOP

An urban rooftop that offers walking pathway to keep you on your toes, community sit-outs for socializing and green zones to explore leisure in nature.

It also comprises of open spaces which can be utilized for sun therapy, party deck, zumba, stargazing, yoga, etc.

Artists Impression

A SECURED & CLOSE-KNIT COMMUNITY

Inspired by all generations... 



SECURITY FEATURE

Artist's Impression

A LUXURY OF PRIVACY

Inspired by all generations... 



BALCONY

Artist's Impression

A PERFECTLY RARE OPULENCE

Inspired by all generations... 



LIVING ROOM

Artist's Impression

A BLISSFUL SOLACE

Inspired by all generations... 



BEDROOM

Artist's Impression



A TASTEFUL GOURMET

Inspired by all generations... 



KITCHEN

Artist's Impression

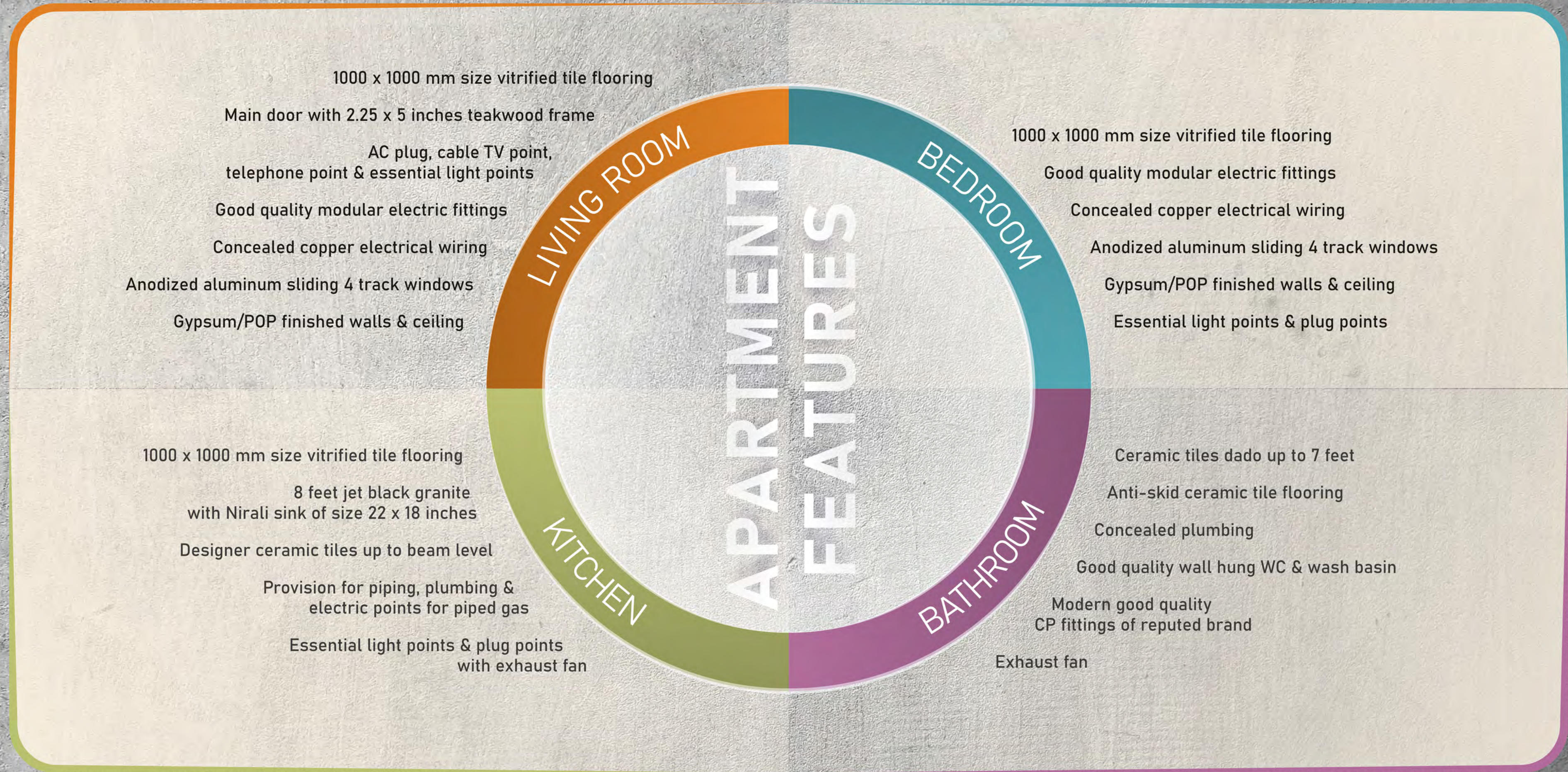
A SOOTHING POISE

Inspired by all generations... 



BATHROOM

# APARTMENT FEATURES



A UNIQUE LIFESTYLE EXPERIENCE

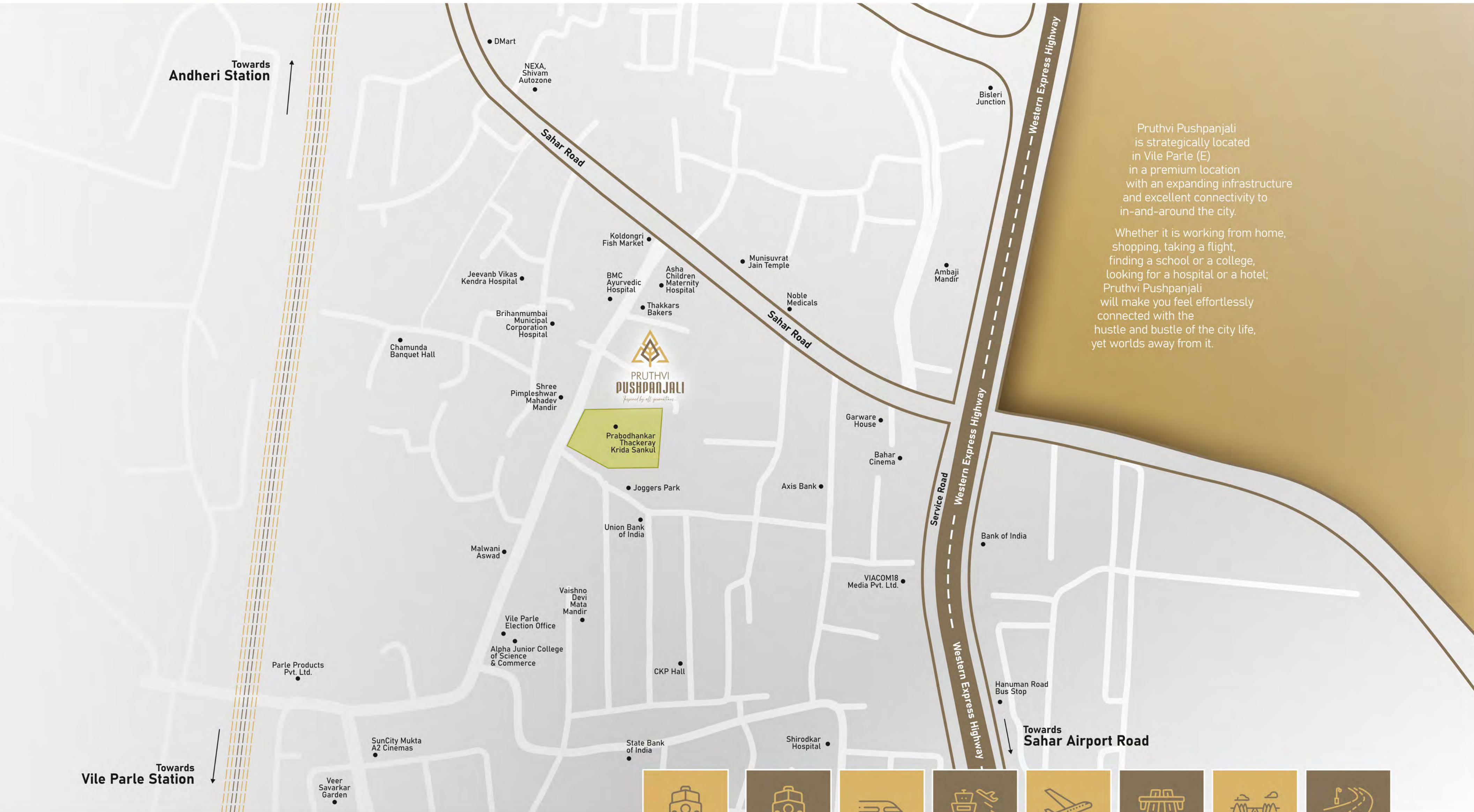
*Inspired by all generations...*



Representational

DOUBLE HEIGHT BASEMENT STACK PARKING

# A BURGEONING LOCALE



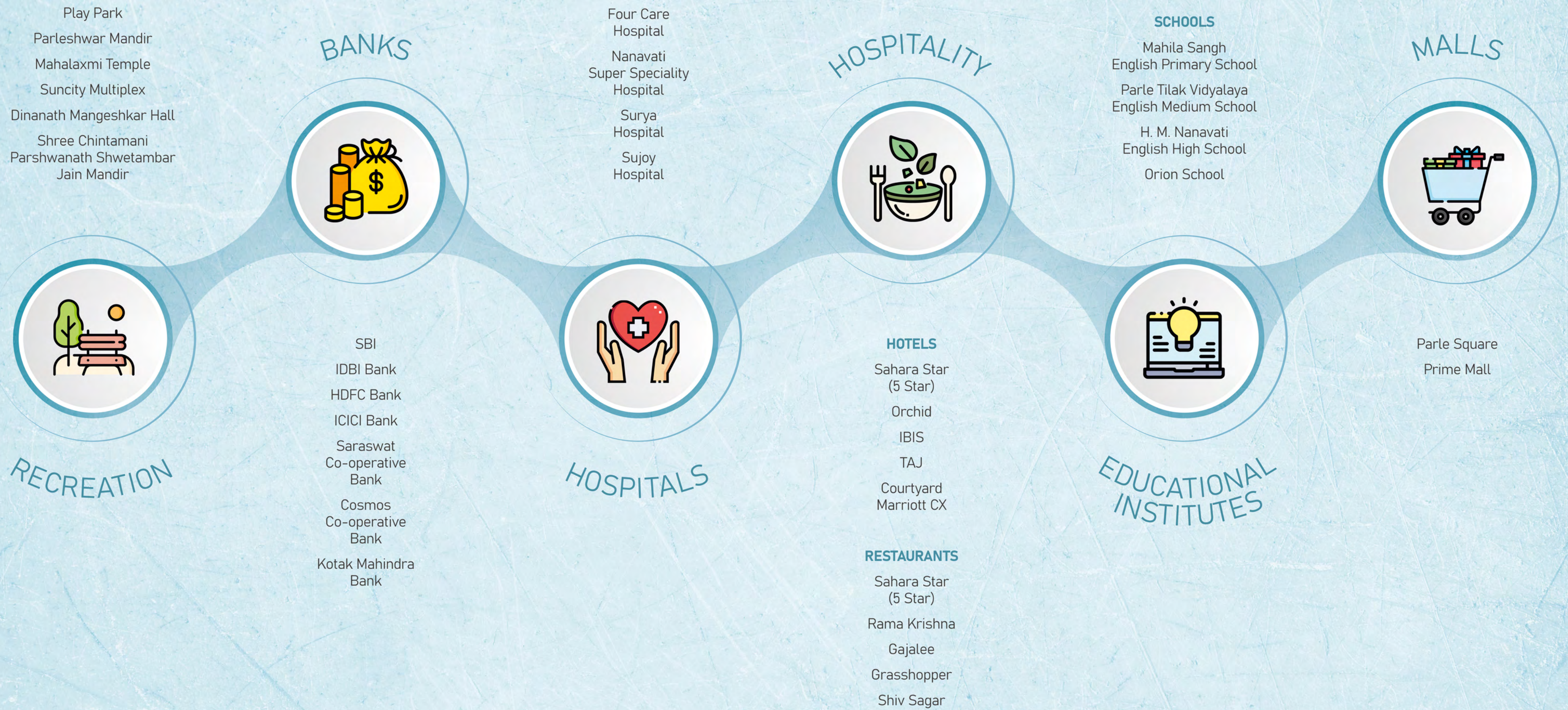
Pruthvi Pushpanjali is strategically located in Vile Parle (E) in a premium location with an expanding infrastructure and excellent connectivity to in-and-around the city.

Whether it is working from home, shopping, taking a flight, finding a school or a college, looking for a hospital or a hotel; Pruthvi Pushpanjali will make you feel effortlessly connected with the hustle and bustle of the city life, yet worlds away from it.



-   
 Vile Parle Railway Station  
5 mins. drive
-   
 Andheri Railway Station  
3 mins. drive
-   
 Andheri Metro Station  
3 mins. drive
-   
 International Airport  
10 mins. drive
-   
 Domestic Airport  
10 mins. drive
-   
 Western Express Highway  
2 mins. drive
-   
 Santacruz-Chembur Link Road (SCLR)  
20 mins. drive
-   
 S. V. Road  
10 mins. drive

# A FLOURISHING NEIGHBOURHOOD



A MAGNIFICENT MARVEL

Inspired by all generations... 



Artists Impression



**OVER 5 LAKHS SQ.FT.  
DEVELOPED  
IN OVER 10 YEARS**

Since, its inception in the year 2007, Pruthvi Group has embraced numerous redevelopment ventures.

The consistency and on-time conveyances has guaranteed an aggregate goodwill.

The projects accomplished are of benchmark quality.

The Group believes in a customer centric approach with uncompromising business ethics, values & transparency in all spheres of business conduct.

**TEAM**

Design Architect  
Kalakruti Architects  
& Planners

Structural Consultant  
EM/s. Epicons  
Consultants Pvt. Ltd.

Project Financed by  
Shriram Housing  
Finance Limited

Developed by  
Pruthvi Group

BMC Architect  
ANJ Engineering  
Consultants LLP

Legal  
Diamondwala & Co.  
(Advocates & Solicitor)

Owners  
The BOI Staff  
Pushpanjali CHS Ltd.