

PRUTHVI
PURUSHOTTAM

INSPIRED BY BRILLIANCE OF
MODERN LIFESTYLE



STEP INTO THE WHOLE NEW WORLD OF INSPIRATION

It's time to take a first step and make a new beginning. It's time to walk through your open door and live your life of adventure. It's time to explore and create new memories. The world belongs to you, so go ahead and discover the secret of inspirational living.



WALK IN FOR AN
ELATED RECEPTION



PRUTHVI
PURUSHOTTAM

INSPIRED BY CRAFTSMANSHIP OF URBAN LIVING

Pruthvi Purushottam, a residential property in Vile Parle (East) is the latest development by Pruthvi Group that redefines architecture, in its truest form! The plush **1, 2, 3, 4 & 5 Bed Residences** with **10.6 ft. floor-to-floor height** embrace luxury, tranquility and an incomparable atmosphere. The functional aesthetics of the striking structure is designed in a way that you experience plenty of fresh air, natural light that brightens up your home and splendid green views.

Experience everything you ever needed from malls to eating joints, hospitals, recreation & schools just a few miles away. Come and explore a splendid lifestyle amidst the most admired location.



EVERY CORNER HERE
EXUDES COUNTLESS EXPERIENCES



FLOOR TO FLOOR HEIGHT 10 FT 6 INCHES
(TALLER LIVING HEIGHT)

1000 x 1000 MM VITRIFIED TILE FLOORING

8 FT. HEIGHTED TEAK WOOD DOOR FRAMES
AND DOORS

HEIGHTED ANODIZED / POWDER COATED
SLIDING WINDOWS WITH MOSQUITTO NET

AC PLUG, CABLE TV POINT, TELEPHONE POINTS
V& ESSENTIAL LIGHT POINTS

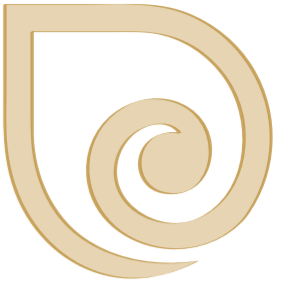
GOOD QUALITY MODULAR ELECTRIC FITTINGS

CONCEALED COPPER ELECTRICAL WIRING

GYPSUM / PLASTER OF PARIS FINISHED WALLS

Representational Image

EACH MOMENT LIVED HERE IS A
RARE PRIVILEGE



FLOOR TO FLOOR HEIGHT 10 FT. 6 INCHES
(TALLER BEDROOM HEIGHT)

1000 x 1000 MM VITRIFIED TILE FLOORING

MASTER BEDROOM WITH WOODEN LOOKING
FLOORING TILES OF APPROPRIATE SIZE

8 FT HEIGHTED TEAK WOOD DOOR FRAME
& DOOR

HEIGHTED ANODIZED / POWDER COATED
SLIDING WINDOWS WITH MOSQUITTO NET

ESSENTIAL LIGHT POINTS AND PLUG POINTS

GOOD QUALITY MODERN ELECTRIC FITTINGS

CONCEALED COPPER ELECTRICAL WIRING

GYPSUM / PLASTER OF PARIS FINISHED WALLS

Representational Image

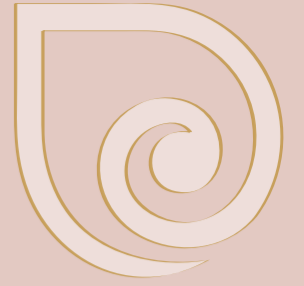
EVERY MEAL COOKED HERE IS A
SOULFUL DELIGHT



- 1000 x 1000 MM VITRIFIED TILE FLOORING
- 12 FT. KITCHEN PLATFORM OF JET BLACK GRANITE
- 22 INCHES x 18 INCHES STAINLESS STEEL SINK
- CERAMIC TILES DADO UP TO BEAM BOTTOM
- CONCEALED PLUMBING FOR WATER INLET AND OUTLET
- DEDICATED AREA FOR WASHING MACHINE
- ADEQUATE ELECTRICAL POINTS FOR KITCHEN EQUIPMENTS

Representational Image

EACH ELEMENT HERE CREATES A
MAGICAL AMBIANCE



- CERAMIC WALL TILES DADO UP TO BEAM BOTTOM
- ANTI SKID FLOORING
- WOODEN FINISH LAMINATED DOOR
- CONCEALED PLUMBING WITH CPVC PIPE
- MODERN GOOD QUALITY FITTINGS OF REPUTED BRAND
- GOOD QUALITY SANITARYWARE OF REPUTED BRAND
- EXHAUST FAN

MAKE THE MOST OF THE FACILITIES FOR EVERYDAY **INDULGENCES**



2 BASEMENTS + GR. + 8 STOREY
RESIDENTIAL PROJECT



QUALITY CONSTRUCTION
WITH EARTHQUAKE RESISTANT



ELEGANT & WELL-DESIGNED
ENTRANCE LOBBY



VIDEO DOOR PHONE &
INTERCOM FACILITY

EXCLUSIVE
1, 2, 3, 4 & 5 BHK FLATS



EXCELLENT PLANNING WITH
NO WASTAGE IN ALL ROOMS



VIGILANT SECURITY SYSTEM
FOR SAFETY



PROVISION FOR
RAIN WATER HARVESTING

24 HOURS WATER SUPPLY
FACILITY



SPACE FOR
FITNESS CENTRE



ADVANCED & HI-TECH
FIRE FIGHTING MACHINE



CROSS VENTILATION
FOR EACH FLAT/APARTMENT

WELL-DECORATED
2 PASSENGER LIFTS



SUFFICIENT CAR PARKING SPACE IN BASEMENT
WITH ACCESS THROUGH CAR LIFTS



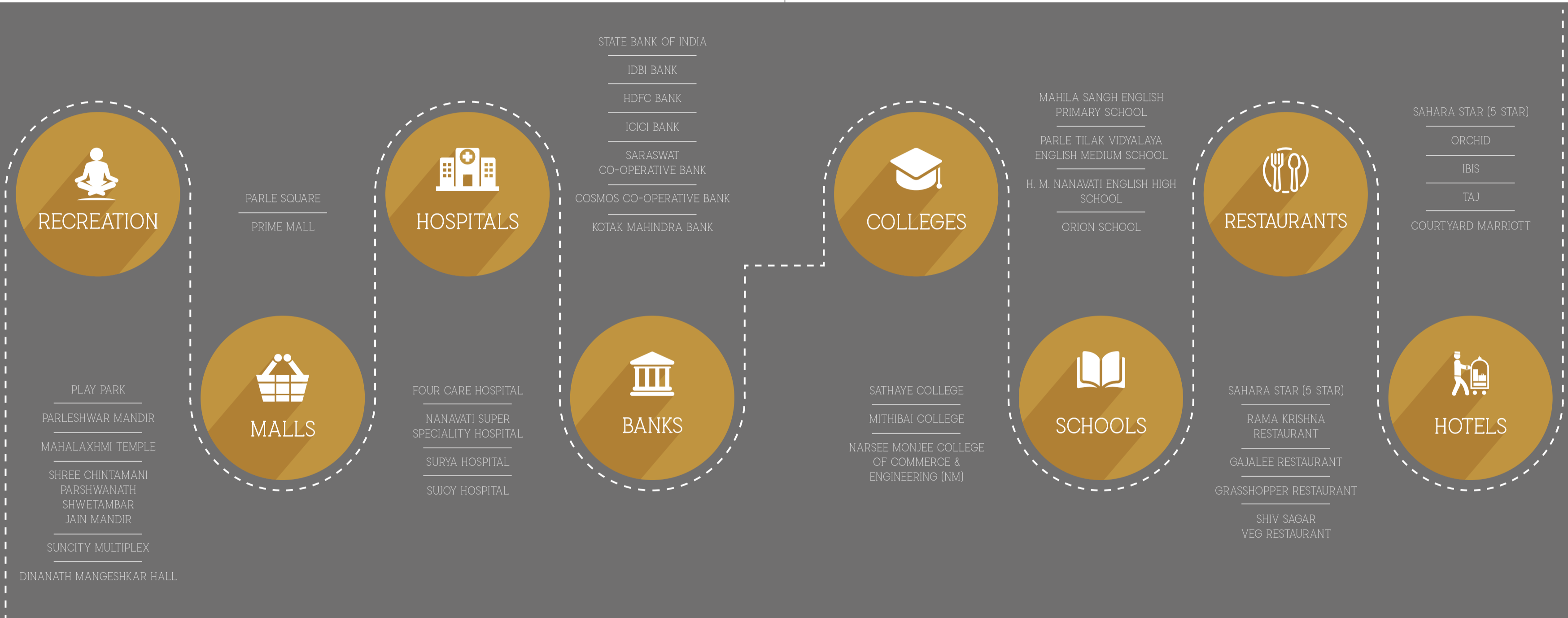
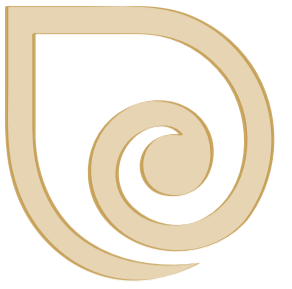
ANTI-TERMITE TREATMENT
TO THE ENTIRE BUILDING



OVERHEAD WATER TANKS
WITH ADEQUATE CAPACITY

OVERHEAD WATER TANKS WITH ADEQUATE CAPACITY

FULFILL YOUR DESIRES WITH THE COMFORT OF CONNECTIVITY



Vile Parle (E) located on the Western Expressway, connects you to the major part of Mumbai City. It enjoys excellent connectivity and has become one of the prime hot-spot of residential development and business hubs. This location ensures proximity to city's prime areas like IT centres, airport, educational institutions, banks, hospitals, temples and malls through a strong network of rail and roads.

Here, you explore plenty of open spaces, endless neighborhood options for shopping, brunching, relaxing or just catching a movie at your convenience and a fast paced but peaceful lifestyle.

IMPECCABLY PLANNED &
CONNECTED NEIGHBOURHOOD

- CONNECTIVITY
- NEIGHBOURHOOD
- JAIN DERASAR & PARLESHWAR GANESH MANDIR



Chhatrapati Shivaji
International Airport
2 kms.

Jain Derasar &
Parleshwar
Ganesh Mandir
Walking Distance
5 mins.

Vile Parle
Railway Station
500 mtrs.

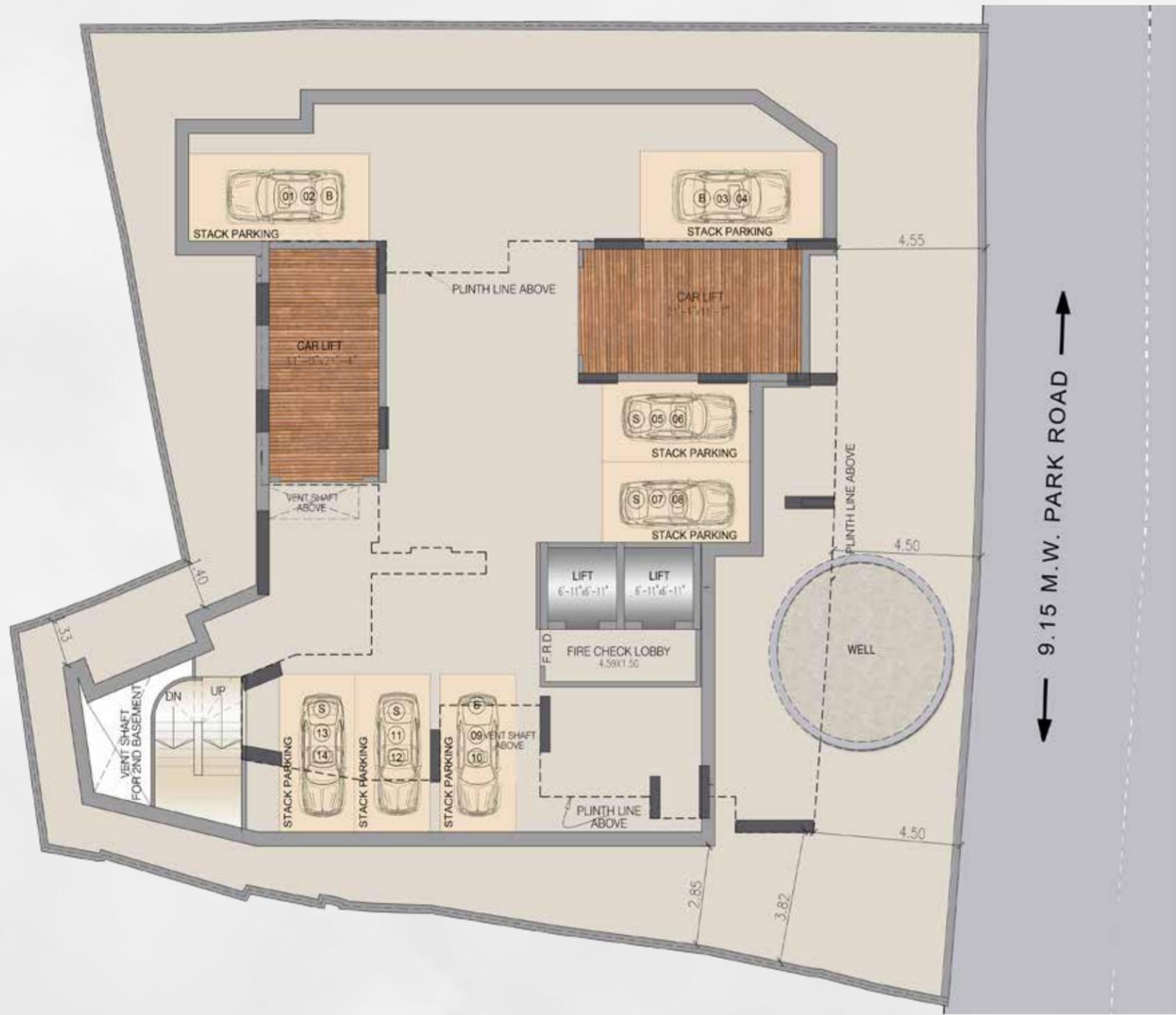
Disclaimer: These distance and time details are approximate and calculated from the center of locality. The numbers may vary from one project in the locality to another.



PRUTHVI
PURUSHOTTAM
1, 2, 3, 4 & 5 BHK | VILE PARLE (E)



BASEMENT FLOOR PLAN



GROUND FLOOR PLAN



1ST FLOOR PLAN



2ND FLOOR PLAN



Disclaimer - all electric points shown may differ in actual.
Furniture and fixtures shown are just for representation purpose only.



Disclaimer - all electric points shown may differ in actual.
Furniture and fixtures shown are just for representation purpose only.

3RD FLOOR PLAN



4TH FLOOR PLAN



Disclaimer - all electric points shown may differ in actual. Furniture and fixtures shown are just for representation purpose only.



Disclaimer - all electric points shown may differ in actual. Furniture and fixtures shown are just for representation purpose only.

5TH & 6TH FLOOR PLAN



7TH FLOOR PLAN



Disclaimer - all electric points shown may differ in actual. Furniture and fixtures shown are just for representation purpose only.



Disclaimer - all electric points shown may differ in actual. Furniture and fixtures shown are just for representation purpose only.

8TH FLOOR PLAN



PRUTHVI
GROUP
BUILDING DREAMS INTO REALITY

5 LAKHS SQ.FT. DEVELOPED IN OVER 10 YEARS



SINCE ITS INCEPTION IN THE YEAR 2007, PRUTHVI GROUP HAS EMBRACED NUMEROUS REDEVELOPMENT VENTURES. THE CONSISTENCY AND ON-TIME CONVEYANCES HAS GUARANTEED AN AGGREGATE GOODWILL.

THE PROJECTS ACCOMPLISHED ARE OF BENCHMARK QUALITY. THE GROUP BELIEVES IN A CUSTOMER CENTRIC APPROACH WITH UNCOMPROMISING BUSINESS ETHICS, VALUES & TRANSPARENCY IN ALL SPHERES OF BUSINESS CONDUCT.



Disclaimer - all electric points shown may differ in actual.
Furniture and fixtures shown are just for representation purpose only.



Design Architect
Sunil Kenkarey

BMC Architect
ANJ Engineering Consultants LLP

RCC Consultant
Epicons (R. D. Deshpande)

Legal
Adv. Trigoon Patwardhan

Project Financed By
Karnataka Bank Ltd.

Owners
Purushottam Niwas

Developed By
Pruthvi Group



Site Address - Purushottam Niwas, Park Road, Vile Parle (E),
Mumbai - 400 057, INDIA.

Corporate Office - Pruthvi Group, Office No. 1 & 2, Parmar CHS Ltd.,
Paranjape B Scheme Road No. 1, Vile Parle (E), Mumbai - 400 057, INDIA.

Tel. +91 22 2618 0796, 2610 0796 | www.pruthvigroup.co | info.pruthvigroup.co

MahaRERA Registration No. P51800022206 | <https://maharera.mahaonline.gov.in>

Disclaimer - This brochure and its images are purely conceptual and not legal offering to its recipient by the promoter/developer nor will it be a part of any binding agreement. All units are unfurnished, and furnishing, fixtures, furniture shown are for aesthetic representation purpose only and are not a part of the flat/unit offered for sale.