



CORPORATE OFFICE:
Pruthvi Group,
Office No. 1 & 2, Parmar CHS Ltd.,
Paranjape B Scheme Road No. 1,
Vile Parle (E), Mumbai - 400 057. INDIA.

SITE ADDRESS:
Pruthvi Pushpanjali, Shahaji Raje Marg,
Vile Parle (E), Mumbai - 400 057. INDIA.

TEL.:
+91 22 2618 0796
+91 22 2610 0796

MOB.:
+91 91672 39292

info@pruthvigroup.co

pruthvigroup.co

MahaRERA Registration No. P51800046070
<https://maharera.mahaonline.gov.in>



DISCLAIMER: This brochure and its images are purely conceptual and not legal offering to its recipient by the promoter/developer nor will it be a part of any binding agreement. All units are unfurnished, and furnishing, fixtures, furniture shown are for aesthetic representation purpose only and are not a part of the flat/unit offered for sale.





Pruthvi Group brings to you
a home that caters for a lifestyle
of every generation.

For the one who treasure
tranquillity and peace to the one
who enjoy making memories
from photogenic moments.

For the one who seeks
outdoor space
of inspiration and creativity
to the one who wishes
to live in a spacious
and open surroundings.

A PROMISE OF A LIFESTYLE FOR ALL GENERATIONS

Pruthvi Pushpanjali
offers **DISTINCT DESIGN &
ARCHITECTURAL STYLES,
LIKE-MINDED COMMUNITIES,
AMPLE OF OUTDOOR ARENAS**
that provide space for introspection
and a neighbourhood seamlessly
connected by all means.

It offers a multi-purpose space
that can be utilized for activities
such as for Fitness,
Meditation, etc.
It also features dedicated pathways,
play areas & other facilities
that are a match
for every generation.

So come and explore the
lifestyle of your dreams because
this is where you truly belong.



**SELF-ESTEEM,
MORALS,
ACHIEVEMENTS**
and all the experiences
of lifetime sparkles
over the faces of a generation,
whom we admire & respect.

A PROMISE OF AN ACTIVE & ENRICHED FUTURE

Pruthvi Pushpanjali,
invites its senior residents
to enjoy a forward-facing lifestyle
at the leading edge of
health and wellness.

It also offers
the comfort of
**CONTEMPORARY DESIGN,
CULTURAL &
SOCIAL OPPORTUNITIES**
along with
peace of mind
to be active
and get involved
in new experiences.



Inspired by all generations...



**CONTENTMENT,
FOCUSED,
ASPIRATIONS**
and all the efforts
which drives a generation
who has built their dreams
and fulfilled them.

A PROMISE OF AN ASTONISHING & MODERN FUTURE

Pruthvi Pushpanjali,
invites its responsible residents
to enjoy the cityscape
in full panorama
from their own deck
to alleviate the stress
of high-powered life.

It also offers
**UNBRIDLED
PRIVACY**
that reflects
individual taste
and stylish hot-spots
all within the soothing
setting of a new home.





**INVOLVED,
INSPIRED,
ENGROSSED**
which encourages
the generation next.

A PROMISE OF AN AWE-INSPIRING & FULFILLING FUTURE

Pruthvi Pushpanjali,
invites its millennials
to enjoy the
lifestyle choices
that are unique
& pleasant.

It also offers forgoing
**LUXURIOUS
INDOORS &
CONVENIENT
OUTDOORS**
that keeps the
active pursuit smarter
with all the modern twists
one would expect.



Inspired by all generations...



A SCINTILLATING PANORAMA

Mesmerize the stunning and sprawling
180° unhindered joggers park
& swimming pool views from the deck.

Lie in bed and watch the sunrise,
or grab your coffee
and head to the balcony
where you can take in the views
of the chirping birds
and blooming flowers.

Inspired by the concept of blooming,
Pruthvi Pushpanjali centers on
introducing a flourishing essence
to the neighborhood
by analyzing various species
of flowers and trees.



SOUTH WEST VIEW

Inspired by all generations... 



PRUTHVI PUSHPANJALI, IS THE LATEST RESIDENTIAL DEVELOPMENT IN VILE PARLE FROM THE HOUSE OF PRUTHVI GROUP

The project comprises of 4 wings offering 2, 3, 3.5, 4, 5 & 6 bed premium apartments with a deck, spread over a lush green landscape that defines peace. It offers a range of indoor and outdoor amenities for you and your family to indulge and enhance a healthy lifestyle.

The apartments have great spatial quality and consist of efficiently designed interiors ensuring maximum ventilation and natural light with pollution-free environment.

For all those who enjoy safe communities and serene environment - Pruthvi Pushpanjali is the definition of peaceful and premium living, where you treasure precious moments and create everlasting memories.



PRUTHVI
PUSHPANJALI
Inspired by all generations...



A WELCOMING ARRIVAL

Inspired by all generations... 



ENTRANCE LOBBY



Double Height
Basement
Stack Parking



Space for
Yoga / Meditation
Centre



Walking
Track



Senior Citizen
Area



Garden &
Pool View



Balcony / Deck
in each Apartment



Gated
Community



Rain Water
Harvesting

Artist's Impression

A PARADISE OF INDULGENCES

Inspired by all generations... 



DRIVEWAY

Artist's Impression

A RECREATIONAL LANDSCAPE

Inspired by all generations... 



ROOFTOP

An urban rooftop that offers walking pathway to keep you on your toes, community sit-outs for socializing and green zones to explore leisure in nature.

It also comprises of open spaces which can be utilized for sun therapy, party deck, zumba, stargazing, yoga, etc.

Artists Impression

A SECURED & CLOSE-KNIT COMMUNITY

Inspired by all generations... 



SECURITY FEATURE

Artist's Impression

A LUXURY OF PRIVACY

Inspired by all generations...



Artist's Impression

BALCONY

A PERFECTLY RARE OPULENCE

Inspired by all generations... 



LIVING ROOM

Artist's Impression

A BLISSFUL SOLACE

Inspired by all generations... 



BEDROOM

Artist's Impression

A TASTEFUL GOURMET

Inspired by all generations... 



KITCHEN

Artist's Impression

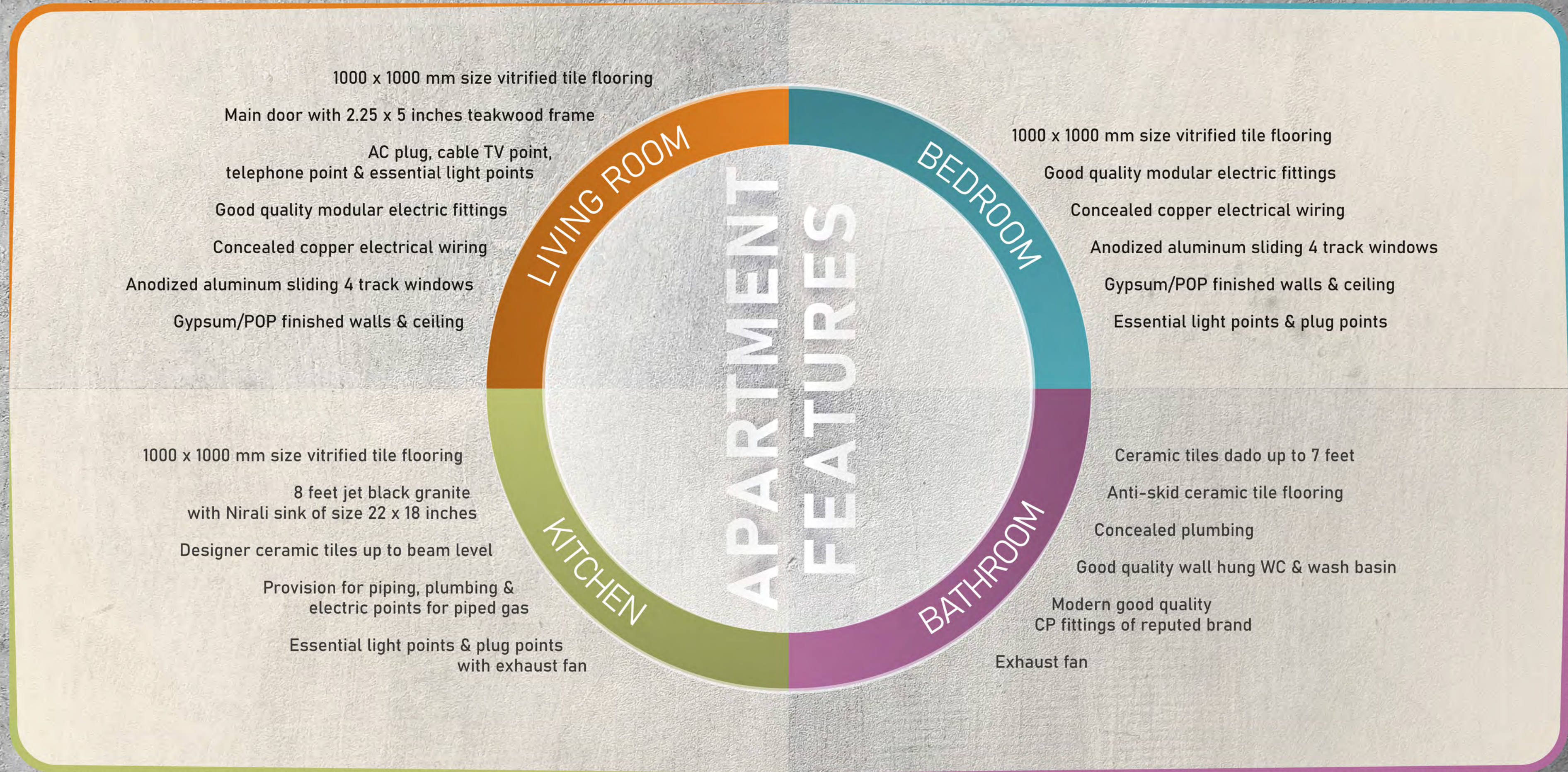
A SOOTHING POISE

Inspired by all generations... 



BATHROOM

APARTMENT FEATURES



A UNIQUE LIFESTYLE EXPERIENCE

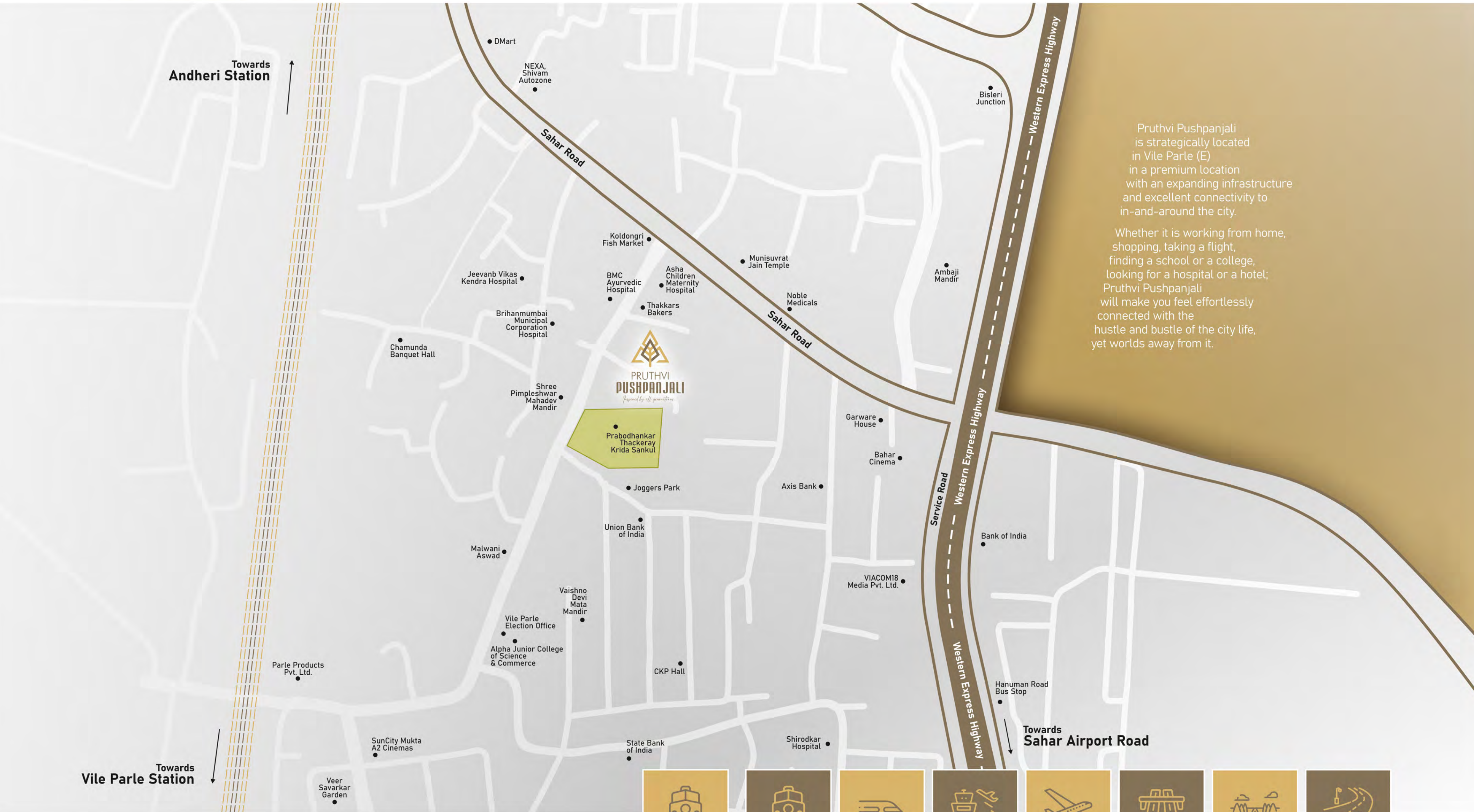
Inspired by all generations...



Representational

DOUBLE HEIGHT BASEMENT STACK PARKING

A BURGEONING LOCALE



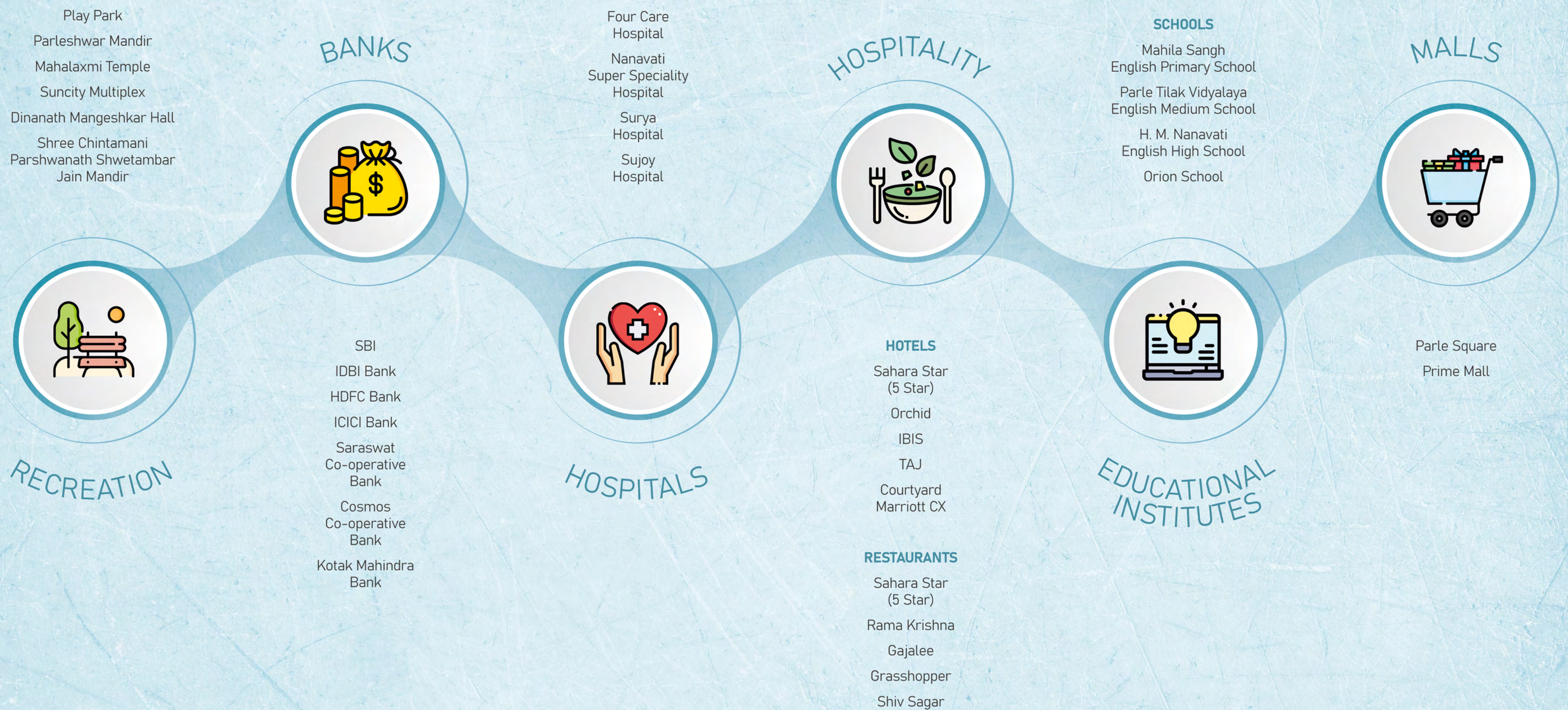
Pruthvi Pushpanjali is strategically located in Vile Parle (E) in a premium location with an expanding infrastructure and excellent connectivity to in-and-around the city.

Whether it is working from home, shopping, taking a flight, finding a school or a college, looking for a hospital or a hotel; Pruthvi Pushpanjali will make you feel effortlessly connected with the hustle and bustle of the city life, yet worlds away from it.



- Vile Parle Railway Station 5 mins. drive
- Andheri Railway Station 3 mins. drive
- Andheri Metro Station 3 mins. drive
- International Airport 10 mins. drive
- Domestic Airport 10 mins. drive
- Western Express Highway 2 mins. drive
- Santacruz-Chembur Link Road (SCLR) 20 mins. drive
- S. V. Road 10 mins. drive

A FLOURISHING NEIGHBOURHOOD



A MAGNIFICENT MARVEL

Inspired by all generations...



Artists Impression



**OVER 5 LAKHS SQ.FT.
DEVELOPED
IN OVER 10 YEARS**

Since, its inception in the year 2007, Pruthvi Group has embraced numerous redevelopment ventures.

The consistency and on-time conveyances has guaranteed an aggregate goodwill.

The projects accomplished are of benchmark quality.

The Group believes in a customer centric approach with uncompromising business ethics, values & transparency in all spheres of business conduct.

TEAM

Design Architect
Kalakruti Architects
& Planners

Structural Consultant
EM/s. Epicons
Consultants Pvt. Ltd.

Project Financed by
Aditya Birla Housing
Finance Limited

Developed by
Pruthvi Group

BMC Architect
ANJ Engineering
Consultants LLP

Legal
Diamondwala & Co.
(Advocates & Solicitor)

Owners
The BOI Staff
Pushpanjali CHS Ltd.